



December 8, 2022

Sauganash Elementary School Annex and Renovations - Project #05425

Status: Construction - Weekly Report

1. Key Dates:

- Notice of Award: 11.18.21*
- Notice to Proceed: 12.03.21*
- Milestone #1 (utility work, site demolition, and UST removal): 12.31.21*
- Milestone #2 (interior renovations and mechanical upgrades): 08.05.22
- Substantial Completion (gym demolition and new annex): 11.30.22 (June 2023***)

2. Construction Progress – Completion Percentages:

- Milestone #1: 100%
- Milestone #2: 99%
- Substantial Completion (Project impacted): 44%

3. Completed Activities:

- Protective sleeve installation at existing ComEd power lines
- Delivery and installation of stud wall and steel bearing plates
- Parapet coping installation at South elevation (main building)
- Structural steel equipment mobilization

4. On-Going Activities:

- Construction submittals and material procurement
- Pre-submittal review meetings (various trades)
- Site control maintenance
- Street cleaning
- Seismograph monitoring
- Construction mock-ups (masonry, roofing, concrete slab, wall system, and window/door openings)
- Plumbing rough-in 1st floor
- BAS wiring
- Rough-in fire protection in Annex II basement
- Masonry work (South elevation)
- Curtain wall and door installation at mock-up assembly
- Steel lintel installation for new connection at existing school building
- Structural steel erection (steel angle at existing school)

5. Upcoming Activities (December 9th through December 15th):

- Structural steel erection for new annex (sequences #2 and #3)
- Waterproofing at Main Building (West)
- Engineered fill at Main Building (West)

6. Working Days and Hours (December 9th through December 15th):

- Friday (December 9th): 6:00am to 9:00pm
- Saturday (December 10th): 7:00am to 5:00pm
- Sunday (December 11th): No Work
- Monday (December 12th) through Thursday (December 15th): 6:00am to 9:00pm

Note: demobilization of masonry scaffolding equipment anticipated on December 10th, pending favorable weather conditions.

7. Current Construction Progress Photographs:

- Attached

Notes: *actual date(s); **approved revised completion date(s); ***current projected Milestone and SC date(s)



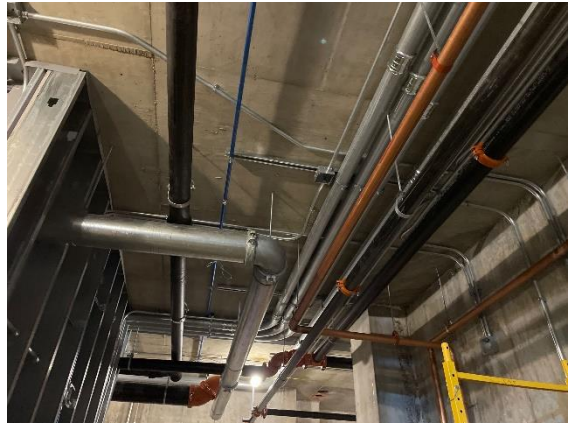
Angle installation at main building (North)



Masonry installation at South wall of new annex



Temporary roofing installation at main building



Plumbing rough-in at new annex basement