



September 8, 2022

Sauganash Elementary School Annex and Renovations - Project #05425

Status: Construction - Weekly Report

1. Key Dates:

- Notice of Award: 11.18.21*
- Notice to Proceed: 12.03.21*
- Milestone #1 (utility work, site demolition, and UST removal): 12.31.21*
- Milestone #2 (interior renovations and mechanical upgrades): 08.05.22
- Substantial Completion (gym demolition and new annex): 11.30.22

2. Construction Progress – Completion Percentages:

- Milestone #1: 100%
- Milestone #2: 99%
- Substantial Completion: 40%

3. Completed Activities:

- Storm trap excavation
- Engineered fill at new building structural slab
- Concrete at grade beam #6
- Vapor retarder at column line #6

4. On-Going Activities:

- Construction submittals, material procurement, and pre-submittal review meetings (various trades)
- Site control maintenance
- Street cleaning
- Seismograph monitoring
- Rebar inspections by City (on-going)
- Construction mock-ups (masonry, roofing, concrete slab, wall system, and window/door openings)
- Ground-level caisson cap and grade beam installation
- Upper-level rebar installation
- Rebar installation at 1st floor slab
- Storm trap slab installation
- 1st floor MEP rough-in

5. Upcoming Activities (September 9th through September 15th):

- 1st floor structural slab installation
- Storm trap installation
- Engineered fill at storm trap
- Epoxy flooring (existing school basement)

6. Working Days and Hours (September 9th through September 15th):

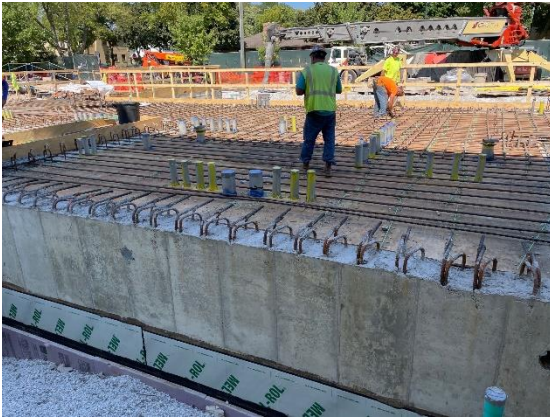
- Friday (September 9th): 6:00am to 9:00pm
- Saturday (September 10th): 7:00am to 5:00pm
- Sunday (September 11th): No Work
- Monday (September 12th) through Thursday (September 15th): 6:00am to 9:00pm

Note: Structural slab work anticipated on September 10th, pending favorable weather conditions.

7. Current Construction Progress Photographs:

- Attached

Notes: *actual date(s); **approved revised completion date(s); ***current projected Milestone and SC date(s)



Rebar installation at 1st floor structural slab



Engineered fill at grade beam # 6



Waterproofing at upper wall of grade beam #6



Engineered fill at storm trap